

Miner Lake Association Spring 2025 Meeting

May 24, 2025

Agenda

- ◆ Approve Minutes from Fall Meeting
- ◆ Treasurer Report
- ◆ Water Quality and Invasive Plant Treatment
- ◆ July “5th” Fireworks and Pontoon Parade
- ◆ Neighborhood Representatives
- ◆ Sewer Update

Treasurer Report

Treasurer Report

Balance 9/24/24		\$13,426.58
Deposits		\$692
Expense Detail	Lake Monitoring Training State of MI 503(b) Printing/Postage July 4th (Partial) Sewer Surveys	-\$570 -\$20 -\$486 -\$60 -\$958.53
Expense Total		-\$2,094.53
Balance 5/15/25		\$12,024.05

Improvement Board Balance

Balance 05/01/25		\$159,245.66
Pending Interest		
CD		~\$1,000
Checking		~\$853

Water Quality Report

- ◆ Performed by Progressive Companies
- ◆ Collection May and July
- ◆ Will publish this presentation and the actual report to the Miner Lake website

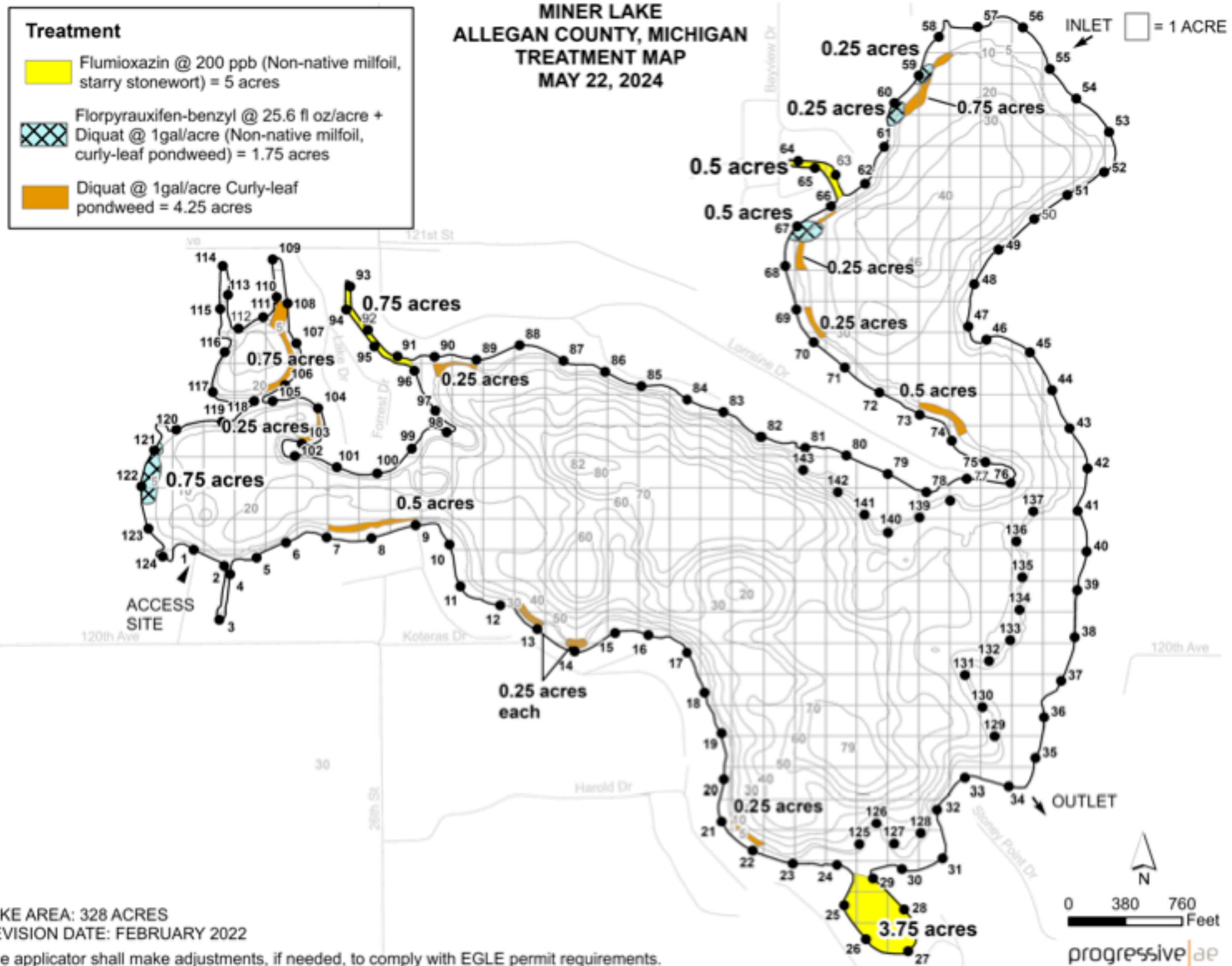
Water Quality and Invasive Plant Treatment

Invasive Treatment Summary

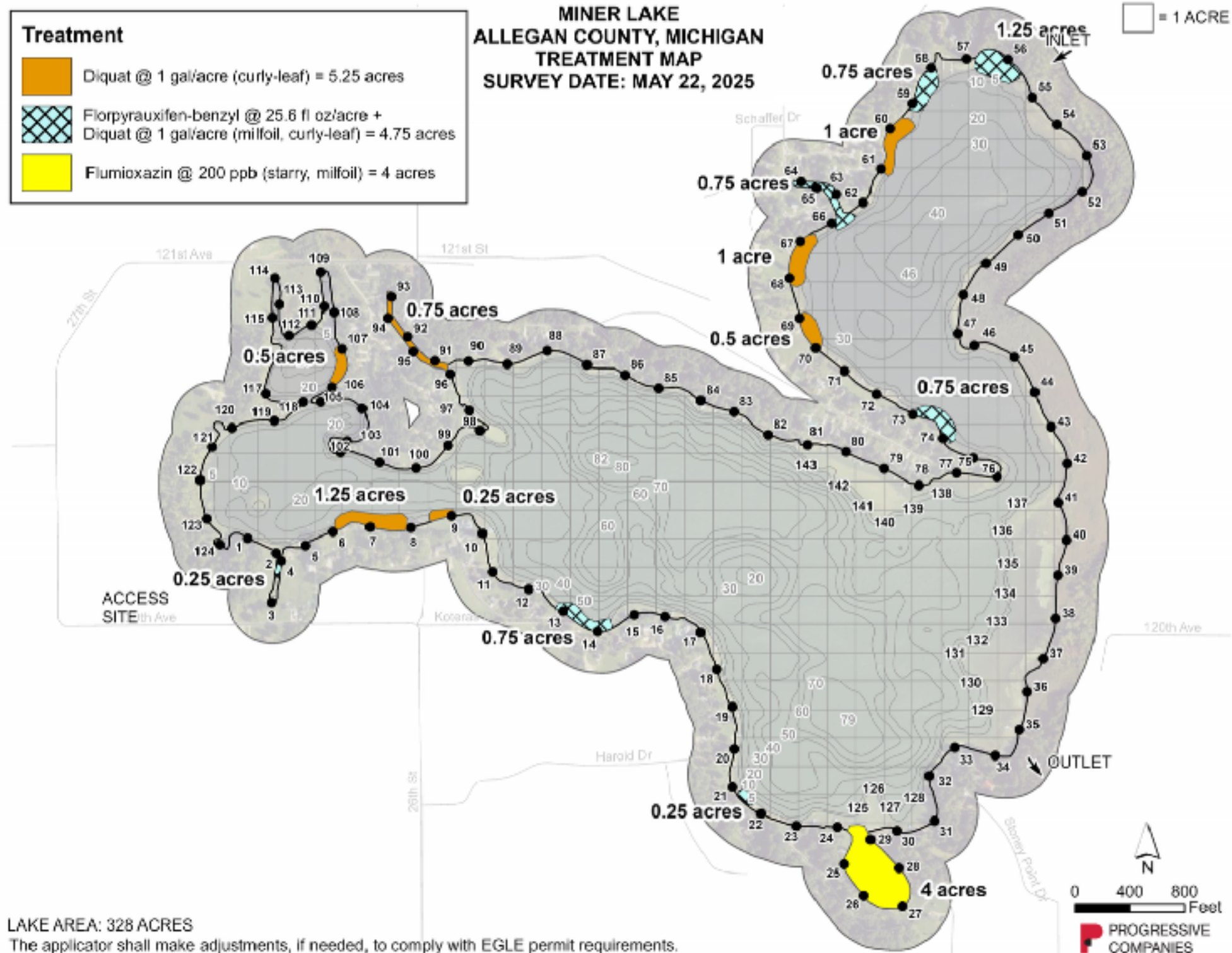
Program has been very successful

- ◆ Decreased treatment acres each year
- ◆ Shift to targeted areas is encouraging
- ◆ Monitor gains late 2024 and early 2025
- ◆ Looking for a tool to allow residents to report problem areas or questions

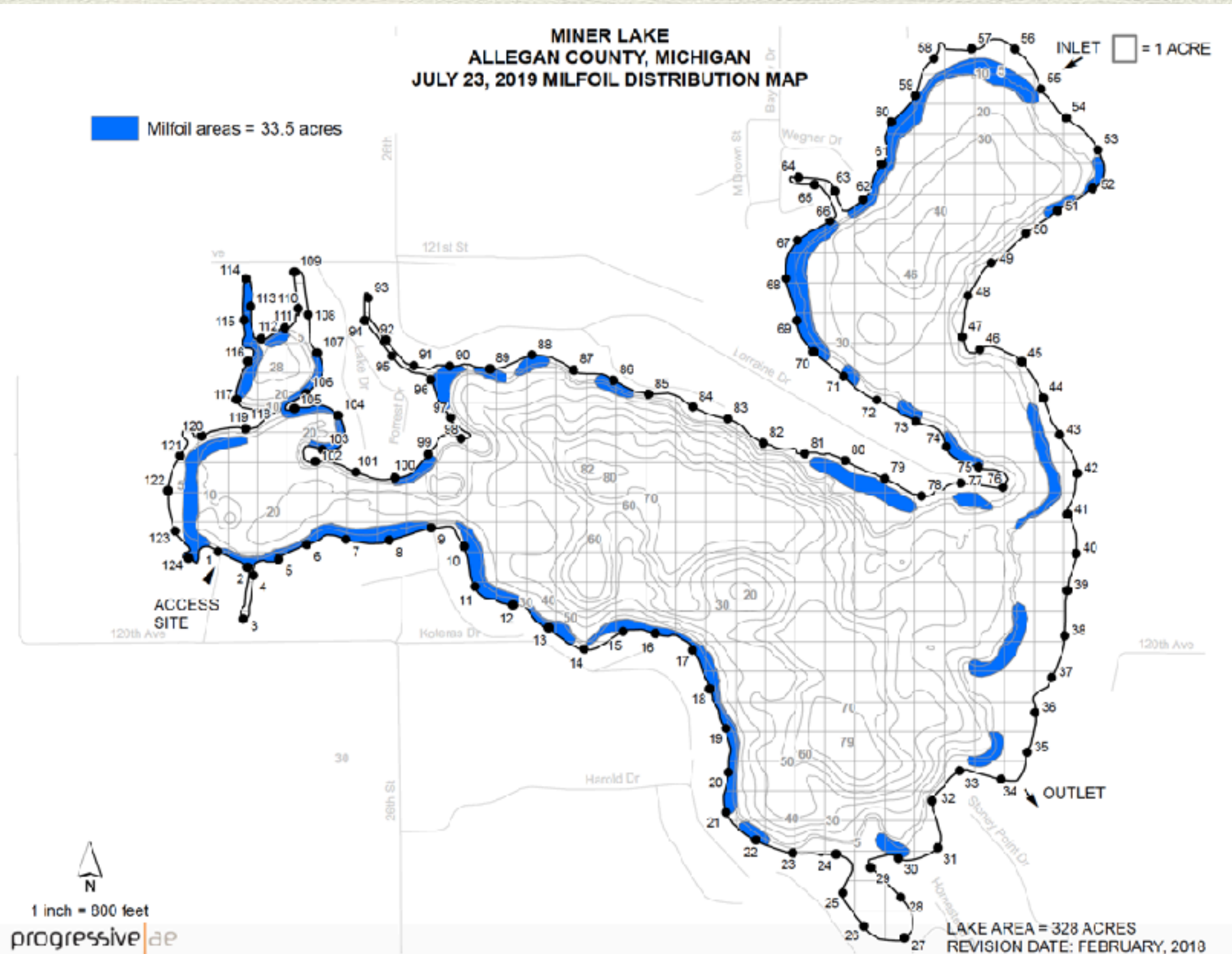
2024 - Early June Treatment



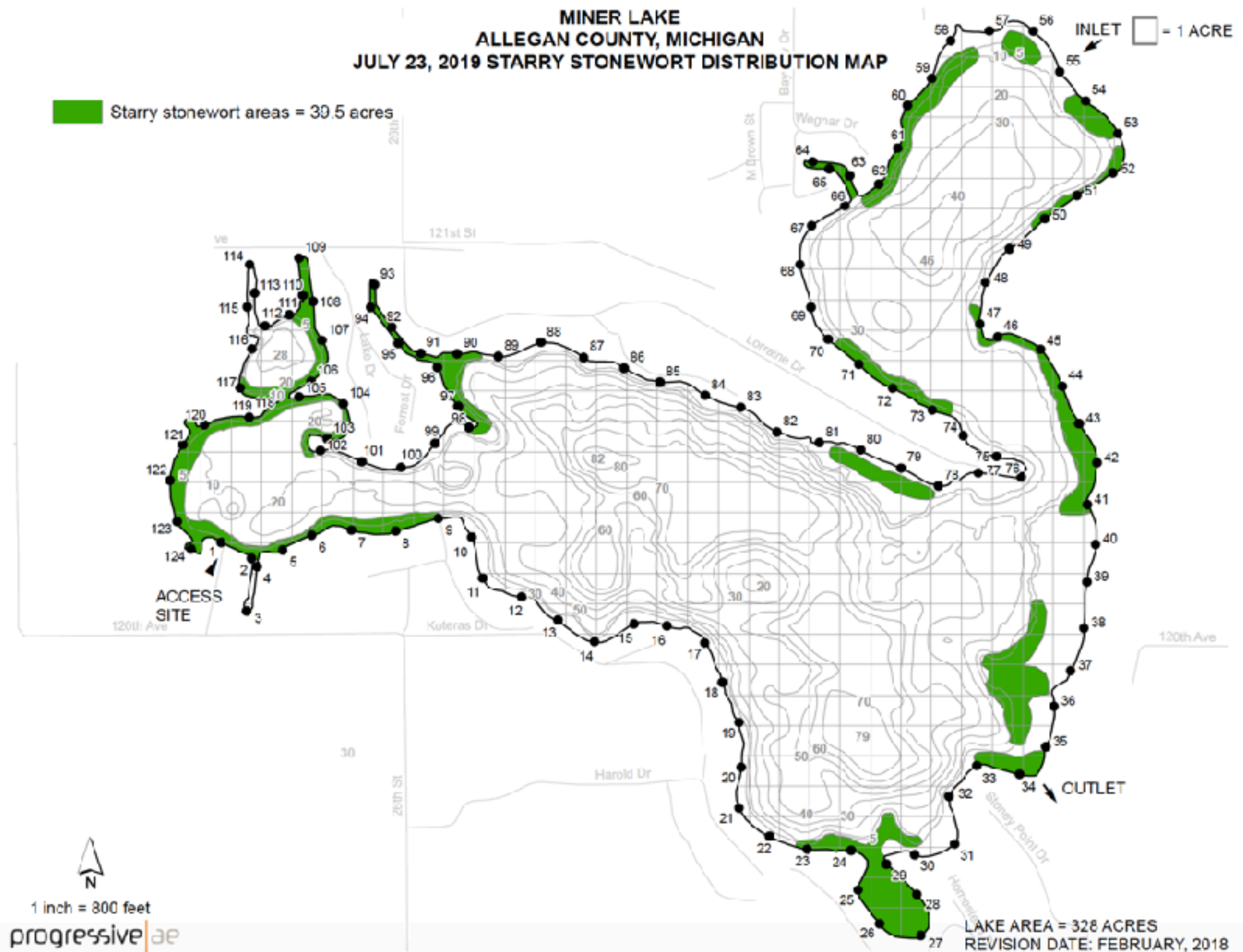
2025 - Planned Treatment



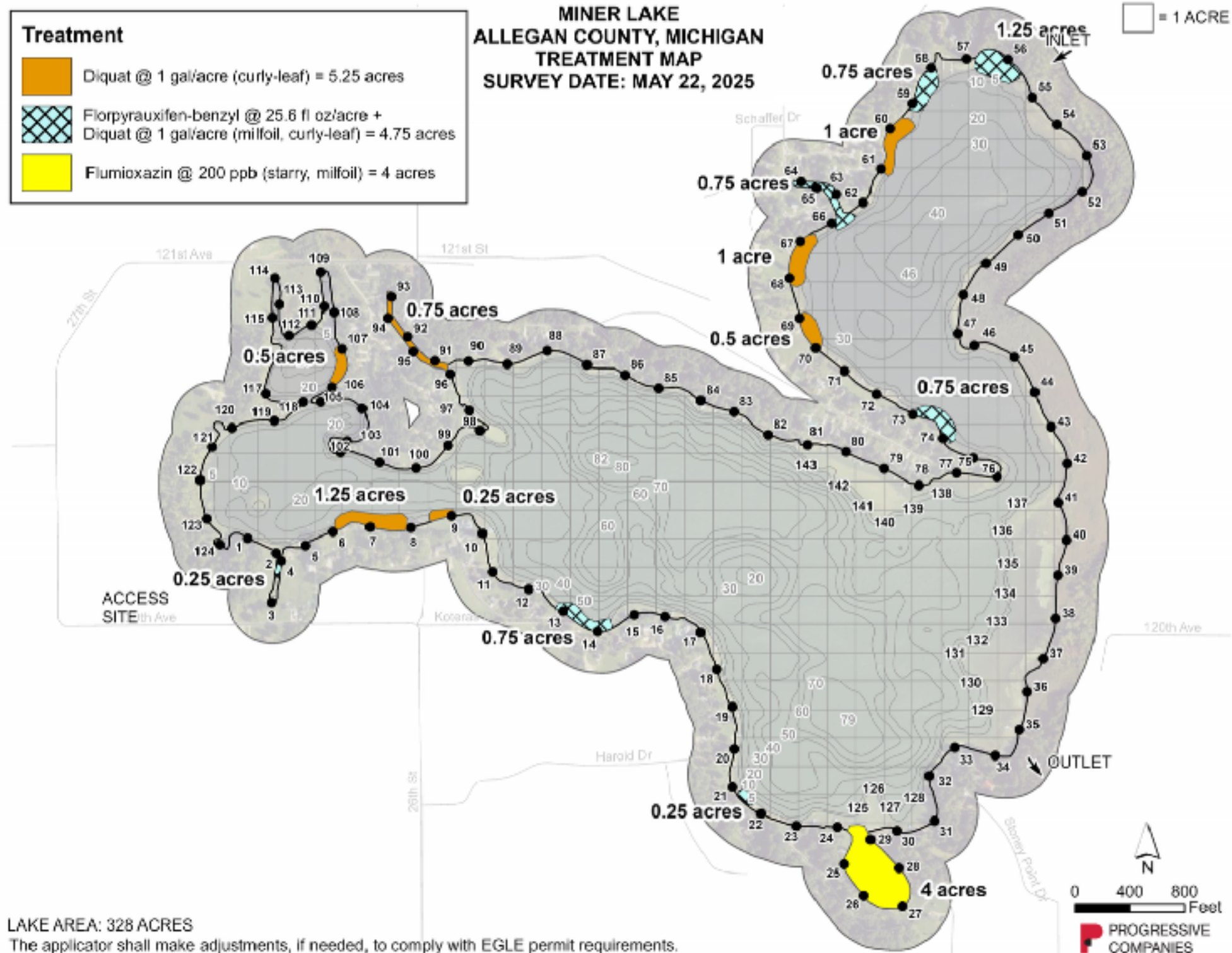
Milfoil - 2019



Starry Stonewart - 2019



2025 - Planned Treatment

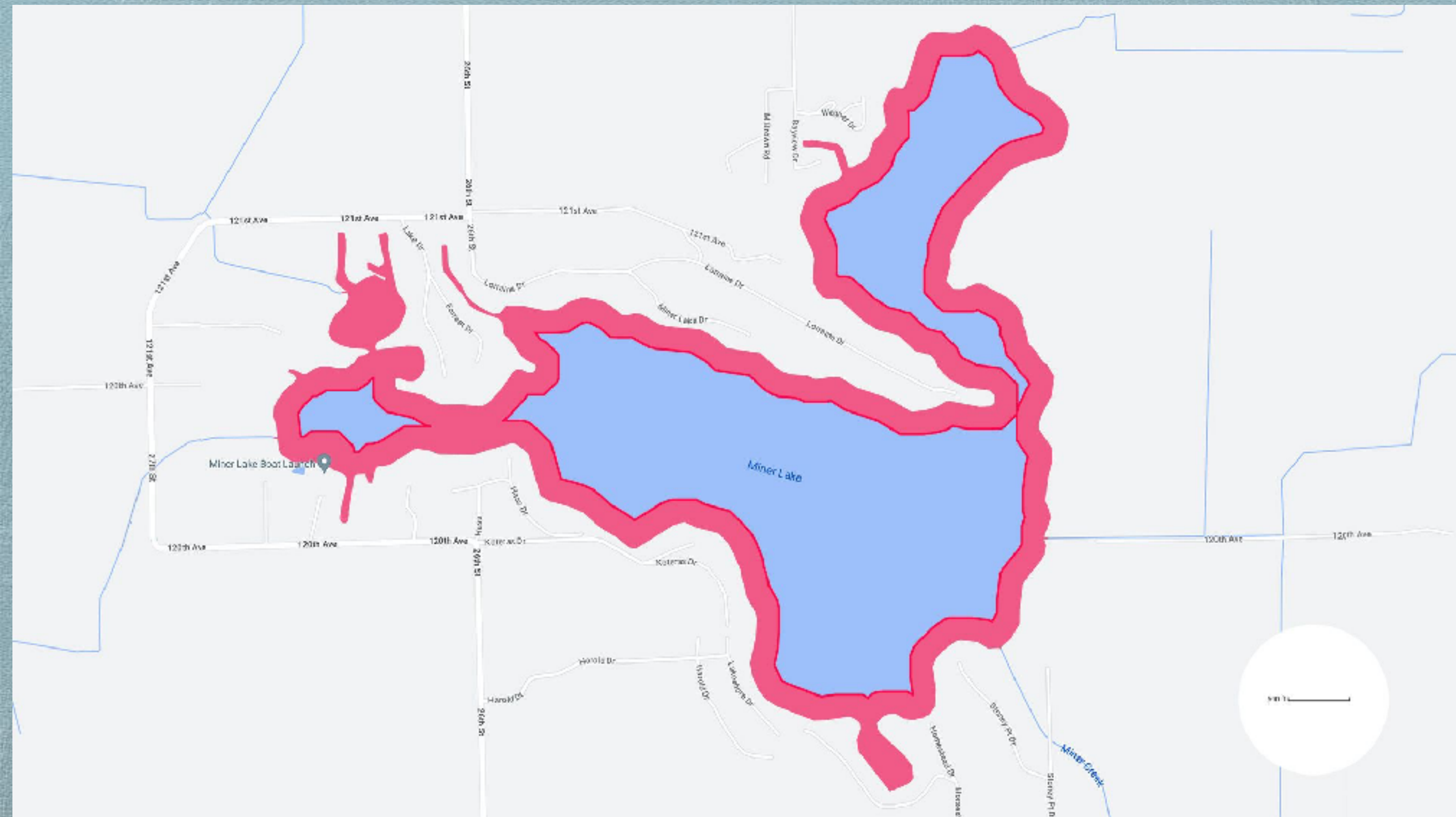


Water Quality Monitoring

- ◆ Contract with ProgressiveAE continues
- ◆ Volunteer collection by **Frank and Kim Shelanskey** for Cooperative Lakes Monitoring Program (CLMP)
 - 200+ Michigan lakes
 - Training for volunteers to monitor lakes
 - Testing supplies
 - Published results

<https://micorps.net/lake-monitoring/>

Boating Practices and Safety



2024 CLMP Report



2024 Data Report for Miner Lake, Allegan County

Site ID: 030260

42.5694°N, 85.7953°W

The CLMP is brought to you by:



Michigan Clean
Water Corps

EGLE

MICHIGAN DEPARTMENT OF
ENVIRONMENT, GREAT LAKES, AND ENERGY

MICHIGAN STATE
UNIVERSITY

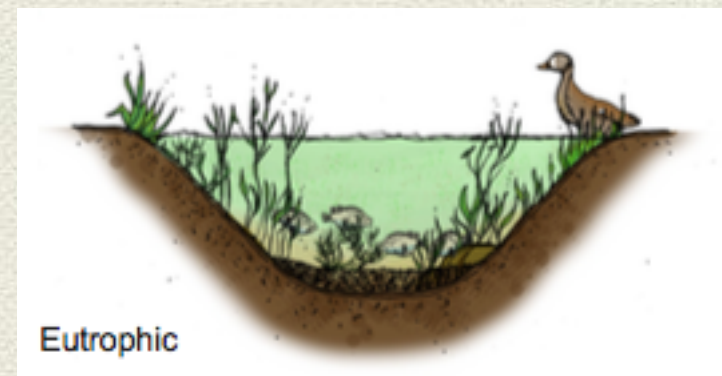
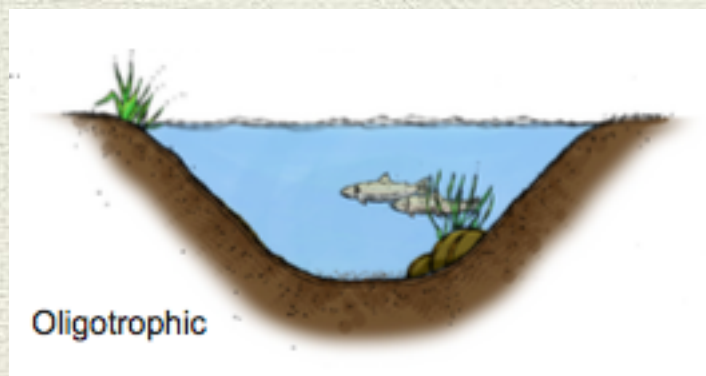


Lake Classification

Oligotrophic lakes are generally deep and clear with little aquatic plant growth. These lakes maintain sufficient dissolved oxygen in the cool, deep bottom waters during late summer to support cold-water fish such as trout and whitefish.

Eutrophic lakes have poor clarity and support abundant aquatic plant growth. In deep eutrophic lakes, the cool bottom waters usually contain little or no dissolved oxygen. Therefore, these lakes can only support warm-water fish such as bass and pike.

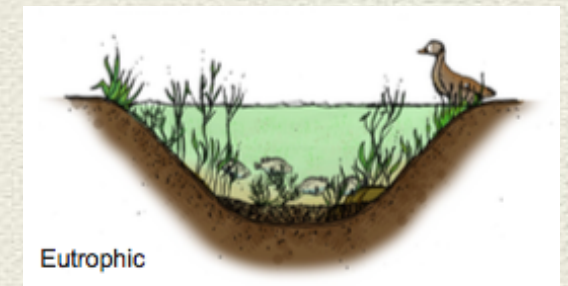
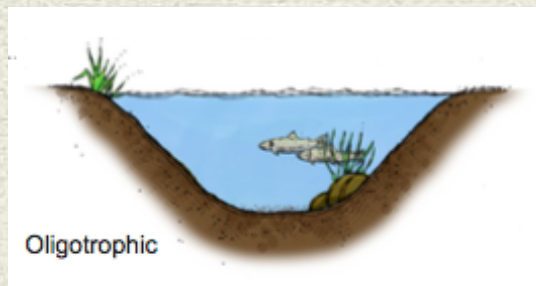
Lakes that fall between the two extremes of oligotrophic and eutrophic are called **mesotrophic** lakes.



Miner Lake

Based on the data collected, Miner Lake is **moderately eutrophic** in that it periodically has **elevated total phosphorus levels** and **reduced Secchi transparency**.

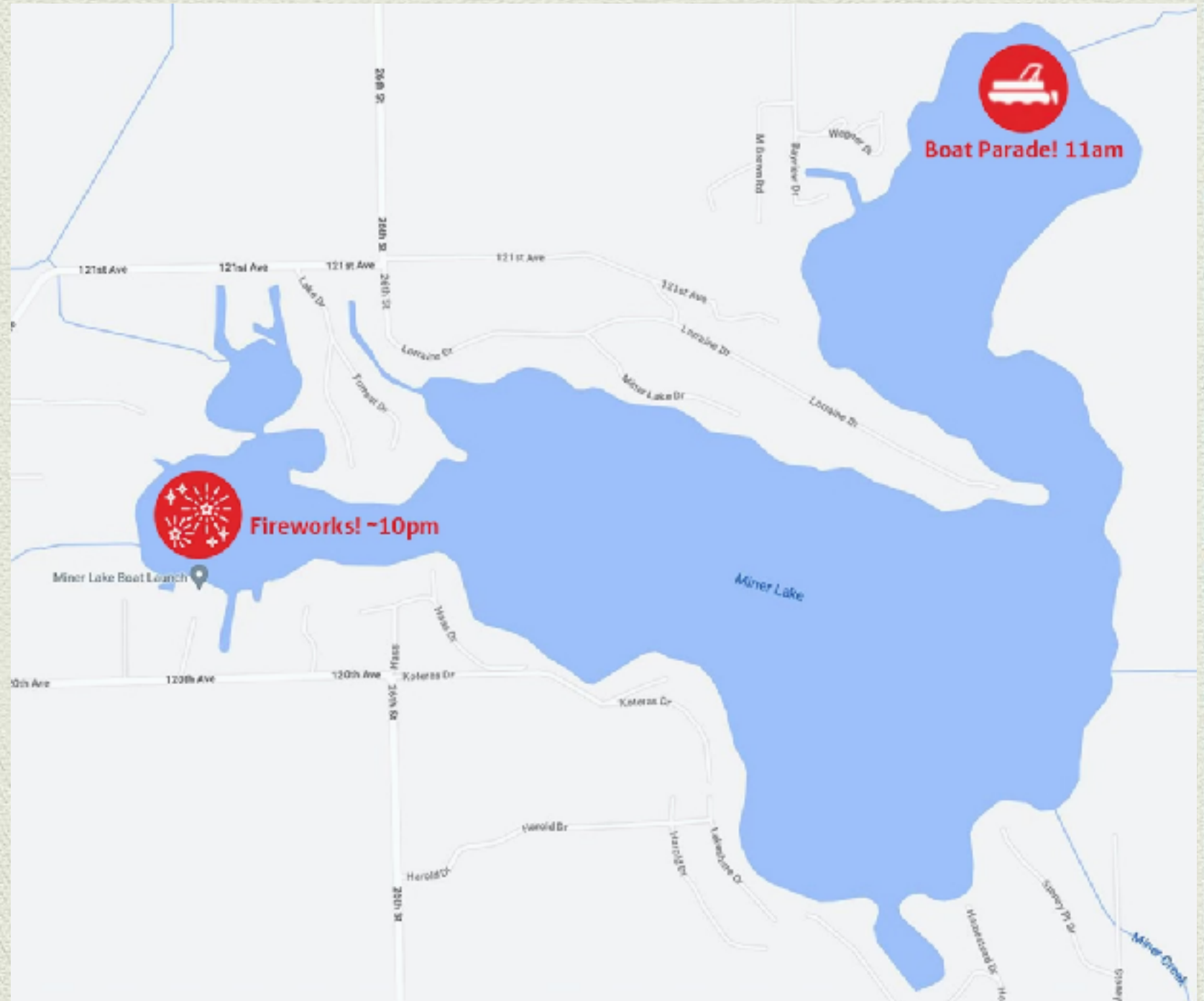
Algae growth in the open waters of the lake is **generally moderate**.



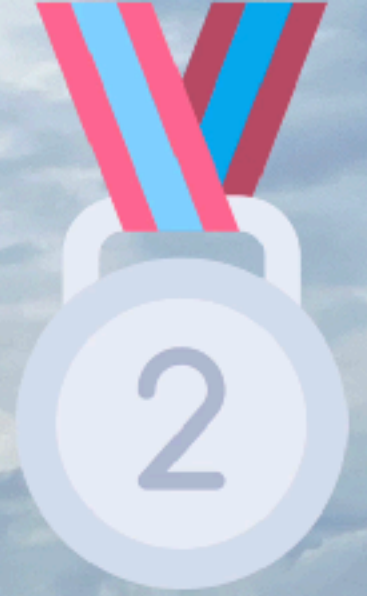
July “5th” Festivities

July “5th” 2025 Activities

- ◆ Pontoon Parade
11am Start Time
(10:30 registration)
- ◆ 1st \$100 + 🏆
2nd \$60
3rd \$40
- ◆ 26 boats (2024)
14 boats (2023)
- ◆ Fireworks ~ 10pm
near the boat launch









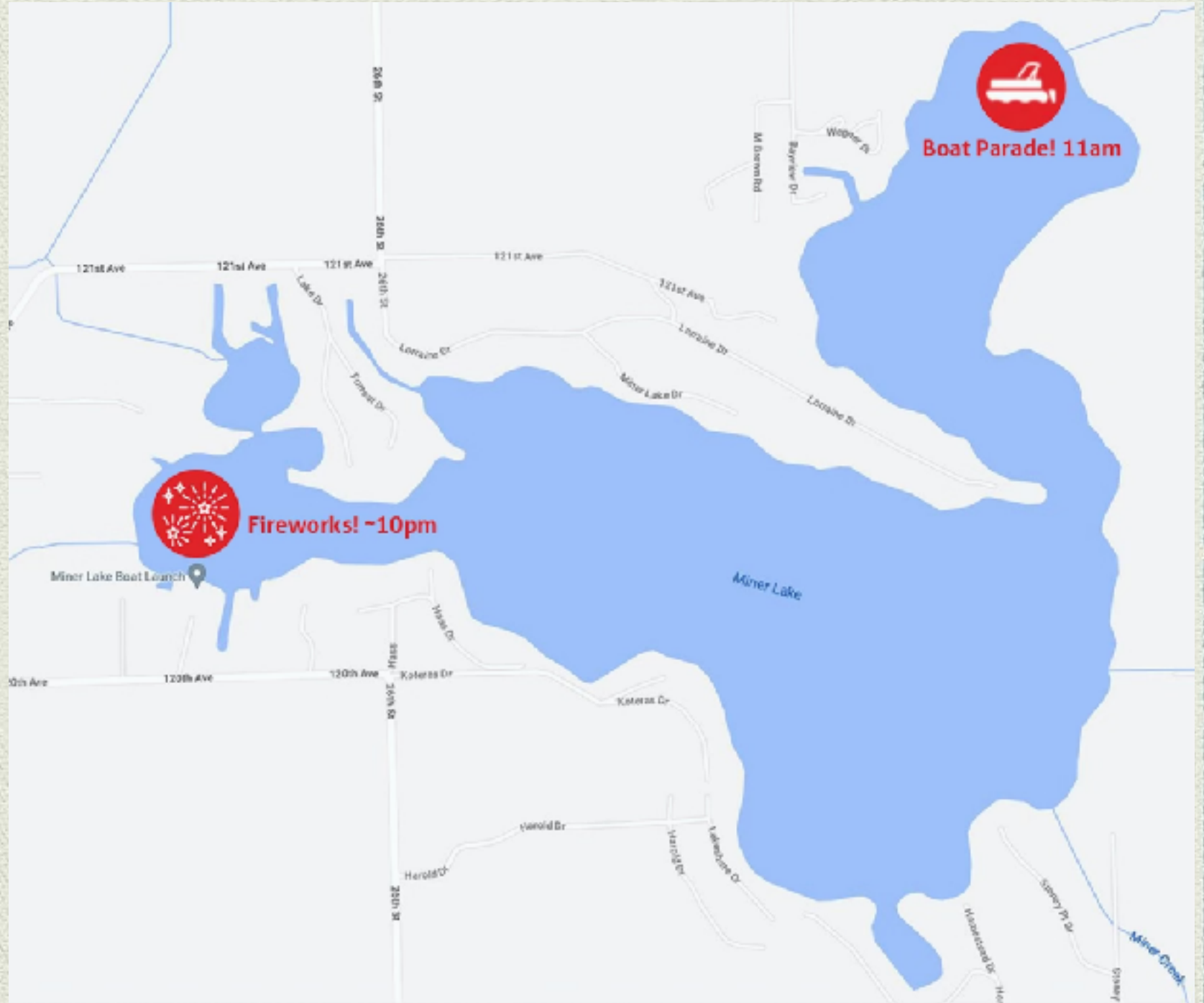






July “5th” 2025 Activities

- ◆ Pontoon Parade
11am Start Time
(10:30 registration)
- ◆ 1st \$100 + 🏆
2nd \$60
3rd \$40
- ◆ Fireworks ~ 10pm
near the boat
launch



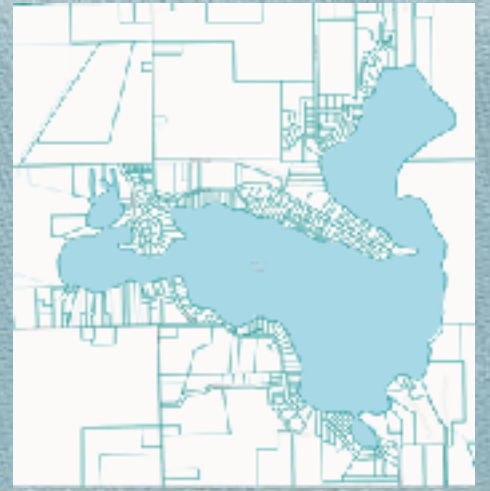
Fireworks

- ◆ Thanks to Keith Norman and Huizinga's
- ◆ Donations: Venmo to @Keith-Norman-29
- ◆ Please limit boat lighting



Neighborhood Representatives

Neighborhood Reps



- ◆ Why?
 - ◆ Additional line of communication between MLPOA team and your neighbors
 - ◆ Help with postcards, phone calls, meeting and survey reminders – Are your neighbors getting them and responding?
 - ◆ Conduit, communicate both ways issues and questions as they arise
- ◆ Expectations
 - ◆ Willing to talk to your neighbors with respect
 - ◆ Good communication skills, ability to listen and share info
 - ◆ About 1-2 hours per month to help

Neighborhood Reps



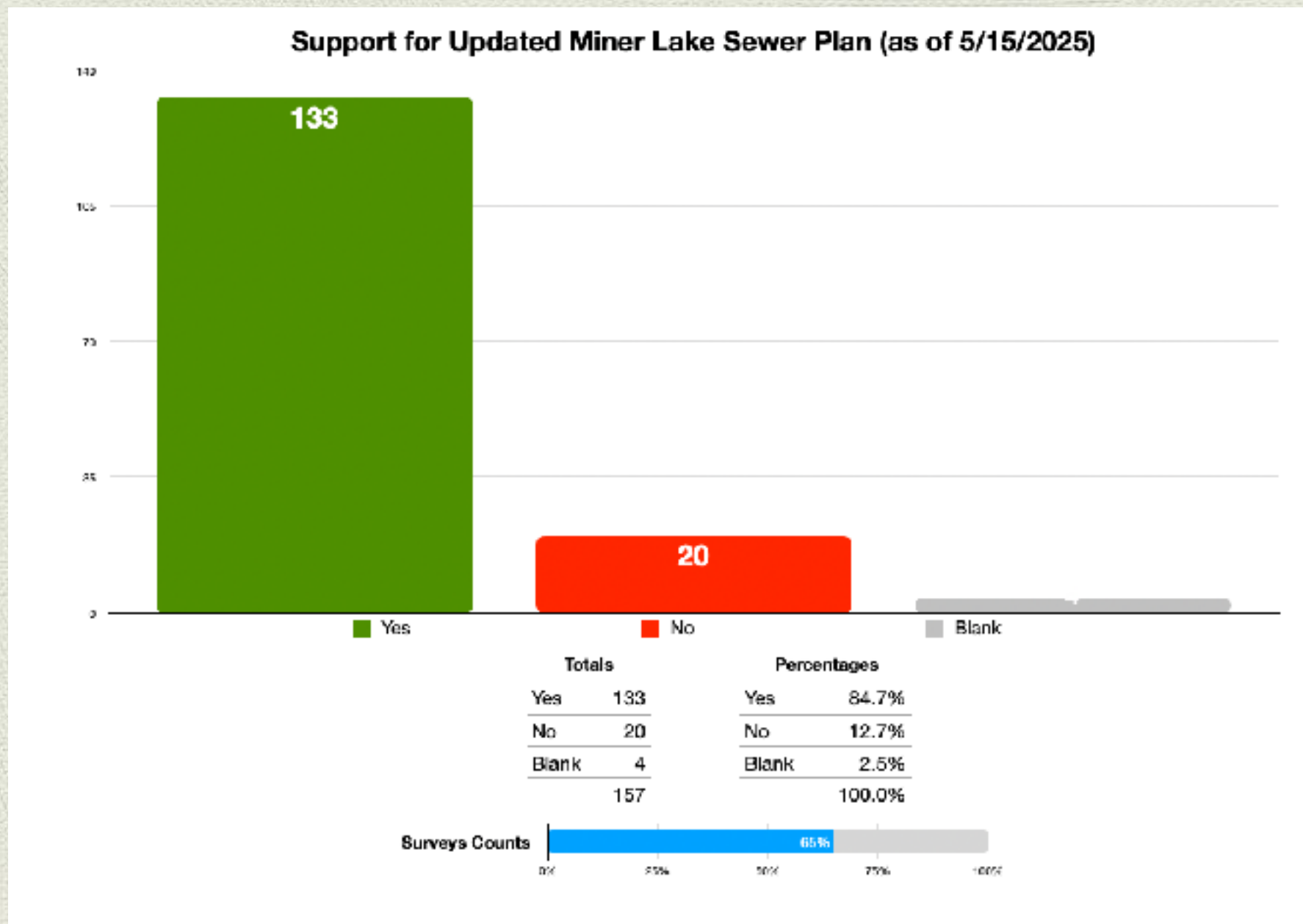
- ◆ Ideally...
 - ◆ Live locally
 - ◆ Willing to ‘get social’ to facilitate small, informal discussions over docks, walks, coffee, drinks, etc. – whatever works for you! Just talk to your neighbors!
- ◆ Timeline: Now to mid-June
- ◆ Interested?
 - ◆ Talk with Dee, Sam or Tom
- Survey on Miner Lake “About” page

A screenshot of the Miner Lake Neighborhood Rep Interest Form. The form is titled "MINER LAKE" and "Neighborhoods". It includes a section for "Neighborhoods" with a description of the program and a link to contact a neighborhood representative. Below this is the "Miner Lake Neighborhood Rep Interest Form" section, which includes a form for Name (First and Last), Lake Address (Address Line 1, Address Line 2, City, State, Zip Code), Phone, and Email. The form is designed to collect contact information for potential neighborhood representatives.

Sewer Update

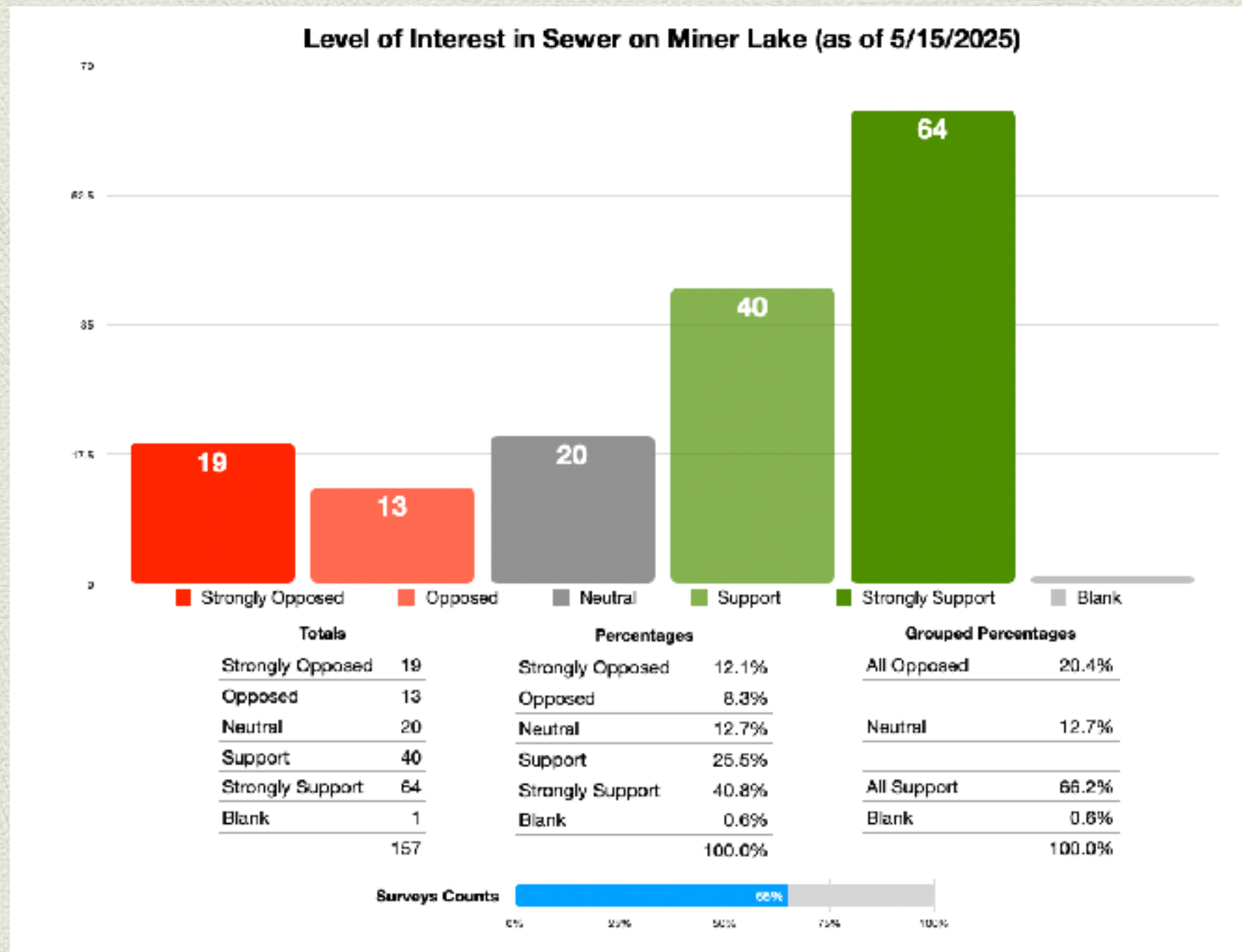
Sewer Survey

Do you support Allegan Township, in partnership with the Miner Lake Property Owners Association, investigating options for a community wastewater system and potential grants/subsidies?



Sewer Survey

Right now, my overall feeling about sewer at Miner Lake is:



Activity / Progress

- ◆ Task Force meets weekly
- ◆ Developed Partnerships
 - ◆ GLCAP / RCAP <https://www.glcap.org/programs/community-rural-development/rural-community-assistance-program-rcap/>
 - ◆ LEO - Office of Rural Prosperity <https://www.michigan.gov/leo/bureaus-agencies/office-of-rural-development>
 - ◆ EGLE / CWSRF Grant <https://www.michigan.gov/egle/regulatory-assistance/funding/fd/state-revolving-fund/cwsrf>
 - ◆ Allegan Township / City of Allegan
- ◆ Reviewing other projects and solutions
- ◆ Submission of CWSRF Grant Application 5/1/25



ALLEGAN TOWNSHIP MINER LAKE SANITARY EXTENSION

CWSRF PROJECT PLAN PUBLIC HEARING

April 29, 2025

Matt Johnson, PE | Fleis & VandenBrink

Agenda

- Purpose of the Presentation
 - Project Background
 - Need for Project
 - Analysis of Alternatives
 - Environmental Review Process
 - Projected Impact on User Charges
 - Construction Contracting Options (Project Delivery)
 - Anticipated Project Schedule
 - Discussion, Q/A
-

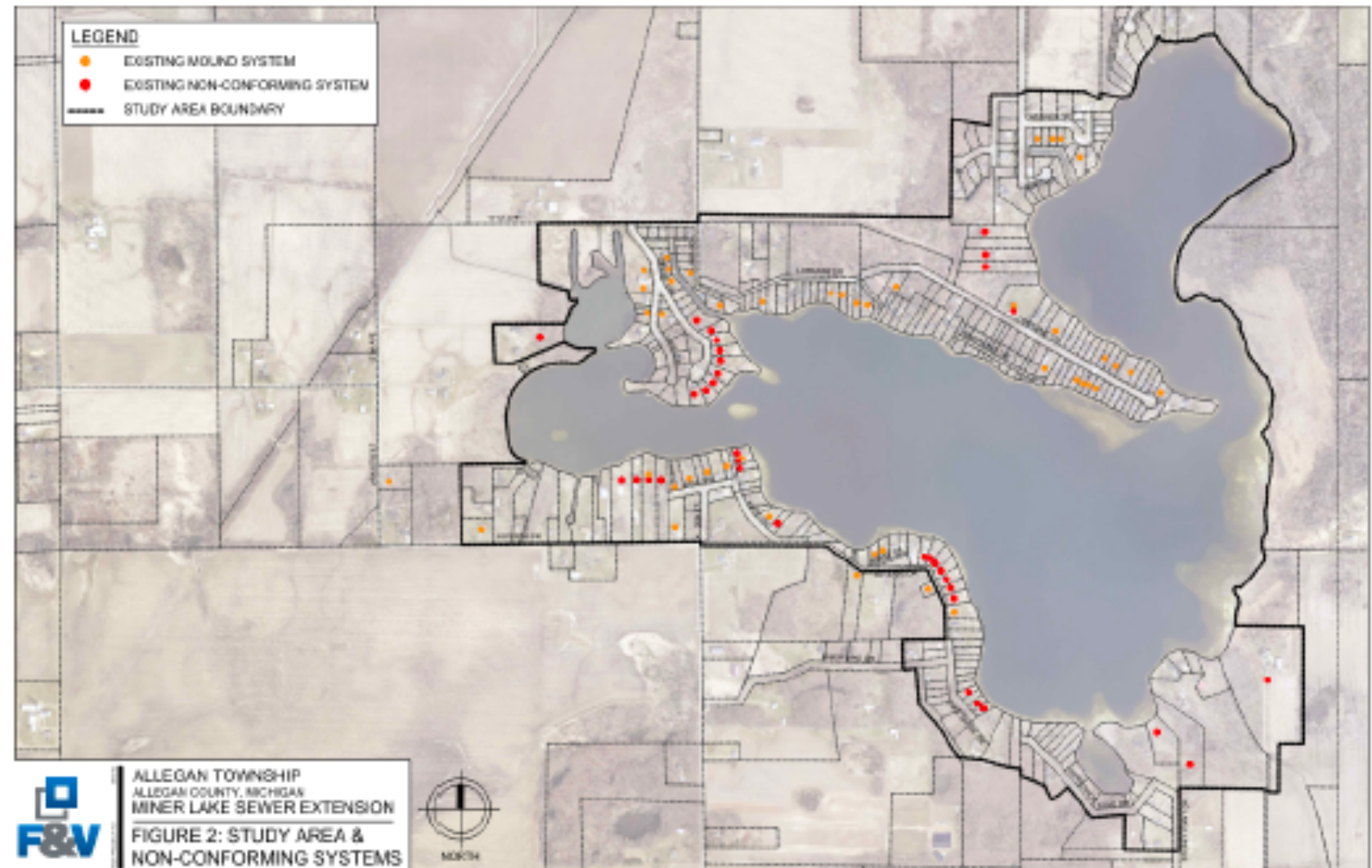
Purpose of the Presentation



- Review the Project Plan
 - Summary of Needs & Alternatives
 - Project Impact on the Environment
 - Discussion of Benefits & Costs
- Address Public Comments/Questions

Need for Project

- Environmental Needs
- Septic Replacement

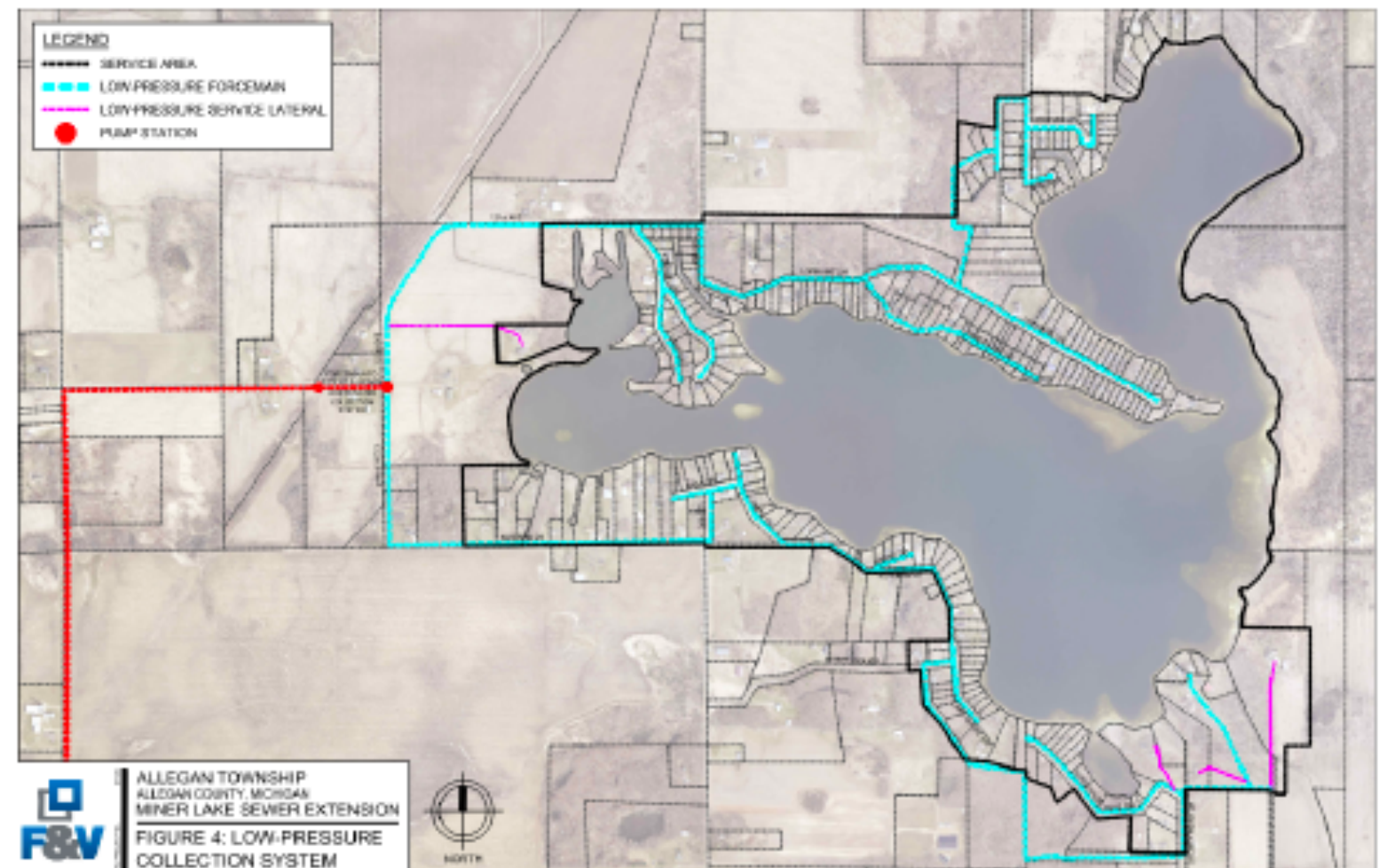


Development of Alternatives

- Alternatives developed in the Project Plan to address urgent needs and satisfy project goals & objectives.
- **Alternatives:**
 - A - Take No Action
 - B - Optimize Existing System
 - C - Treatment Options
 - D - Gravity System to Allegan
 - E - Grinder System To Allegan
 - F - Step System To Allegan

PRINCIPAL ALTERNATIVE F

- \$14,138,000 Construction
- Liquid Disposal Only
- \$62,000 per property
- \$229/Month Assessment
- \$22/month^{*} maintenance fee
- \$49/month flat^{**} usage rate fee



Currently

* \$16/month

** \$40/month or \$7/1,000 gallons/month with a meter

Anticipated Planning/Design Schedule

Milestone	Anticipated Date
Submit Final DWSRF Project Plan to EGLE	May 2025
Submit Preliminary Plans & Specifications	January 2026
Submit Final Plans & Specifications	March 2026
Bidding	May 2026
EGLE Order of Approval	August 2026
Begin Construction	September/October 2026
Complete Construction	September 2027
Project Closeout/Record Drawings	November/December 2027

Sewer - Why this design

- ◆ STEP offers the most cost effective solution
- ◆ Local Treatment options proved to have short lifespan (15-25 yrs) and replacement risks
- ◆ Option for Allegan Township ordinance to extend use of “newly installed” systems that meet County Regulations
- ◆ Seasonal residents benefit from meters to avoid “flat fee”
- ◆ Miner Lake residents play a key role in the process (Assessment District and Review Board)

Key Considerations

- ◆ Estimated project cost are likely high:
Built for “up to 3 yrs out”, does not include grants, or actual bids at project time
- ◆ Most properties on Miner Lake would not qualify for a new systems under current Allegan Co. Health Dept. guidelines without significant variances
- ◆ Alternatives are very expensive: \$, Lifestyle and Property Values
- ◆ Replacement septic systems (if possible) are approaching the cost of sewer, plus payment over time, and limited life expectancy
- ◆ Improved lifestyle and use of your property
- ◆ Community effort, occurring at the same time
- ◆ Current Code dates back to the 1970's and is being revisited
- ◆ Anticipated State of MI regulations for on-site waste systems

Next Steps

- ◆ Special Assessment District - Petition by early July
 - ◆ Needed to confirm the service area
 - ◆ Establish an entity to manage the project, partner with municipalities, engage professionals, and receive grants
 - ◆ Move past DRAFT engineering plan
 - ◆ Special Assessment District can be dissolved if the project ends
- ◆ Neighborhood Meetings
- ◆ Pursue additional funding support
 - ◆ LEO project grant, USDA-RD, State and Federal Earmarks

Thank You for Attending
Happy Memorial Day!